

# TECH TALKS

With Frontier  
Customer Support

**Your Topics**

**For Your Success**

## Frontier 4.1 Custom Inquiries

---

FAIZAN AHMED

# Overview

---

Enable Frontier users to

- Define and execute custom inquiries over Frontier Database Files
- Manipulate Inquiry Results

# ilnquiry Functionalities

---

- Resequencing
- Filtering
- Column Arrangement
- Showing / Hiding columns
- Hyperlinking to existing Frontier UI web pages and custom inquiries

# Required Skill set for setup

---

Basic knowledge for SQL (structured query language)

Knowledge of Frontier DB structure

Familiarity with Frontier Master File applications

# Frontier Data Models

---

Define relationships between Frontier business entities and associated database files.

i.e. CMP file defines the SHIP-TO customer, SOLD-TO customer, and INVOICE-TO customer.

# Frontier Data Models

---

## 3 Sales Order Data Models:

- OH – Sales Order Header
- O4 – Sales Order Release
- O6 – Sales Order Detail

## Additional data models defining Customer and Product Attributes

- PMA – Product Attribute
- C1A – Customer Attribute
- OA – Sales Order Attributes
- etc.

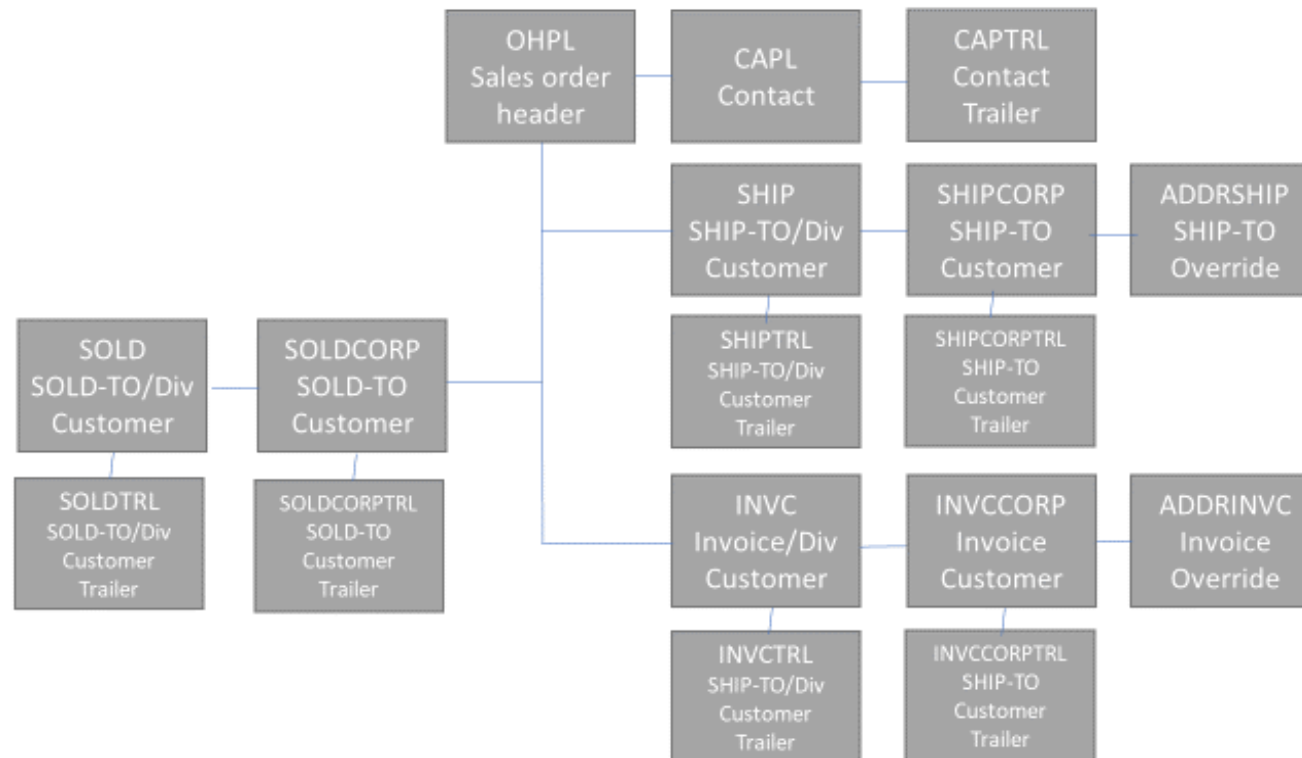
# Frontier Data Models

---

One data model can refer to and include another data model.

i.e. O6 Sales Order Detail data model references (and includes) the O4 Shipping Release data model, which in turn references the OH Order Header data model.

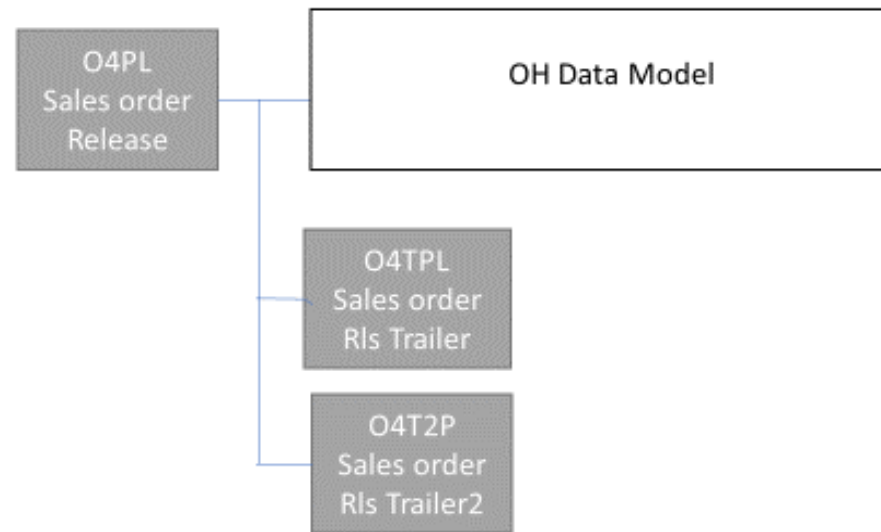
# OH Sales Header Data Model



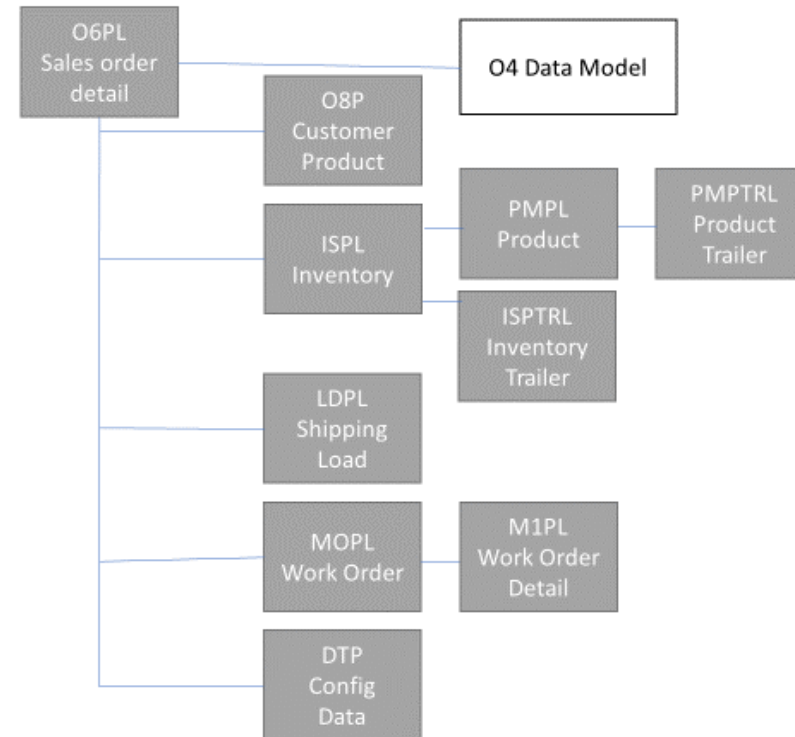


# O4 Release Data Model

---



# O6 Sales Order Detail Data Model



# Frontier Data Models

---

Each data model represents a flat data structure where each entity in the model has a 1:1 relationship with the other entities.

Inquiries can include sub-queries that compute aggregate values from 1:M DB tables.



---

# Configuring Custom Inquiries

---

# Welcome to **Frontier**

SELECT AN APPLICATION

Select division: 01 ▼

☒ set as default

FRN041C | [Logout](#)



**Sales**



**Distribution**



**Returns and Service**



**Purchasing**



**Customer**



**Accounts Receivable**



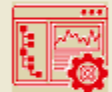
**Attribute Management**



**Vendor**



**Accounts Payable**



**Data Management**



**Inventory Management**



**Manufacturing**



**General Ledger**



**PCM Cache/Debug**



**CAD Flow**



**SVG**



**Application Configuration**



**System Administration**

System: herbert1

Data Library: FRNCNS041

© 2021 Friedman Corporation

- Configure Accounts Payable Views
- Configure Accounts Payable Payment Views
- Configure Accounts Receivable Controls
- Configure Accounts Receivable Views
- Configure General Ledger Controls
- Configure iDispatch Execution
- Configure iDispatch Planning
- Configure iSchedule
- Configure Load/Capacity View
- Configure iService Schedule
- Configure Master File Views
- Configure Master File Logs
- Configure Menus
- Customize Purchase Order Views
- Customize Purchase Order Receiving Views
- Customize Purchase Order Receipt Management Views
- Customize Sales Order Views
- Configure Sales Order Logs
- Configure Inventory Issues and Receipts
- Configure Work Orderless Reporting
- Configure Workorder Reporting
- Configure Inventory Stock Transfers
- Configure Line Menus
- Customize RMA Views
- Configure Custom Inquiries**
- Display Custom Inquiry



# Grid Configuration

Division **01**
Type: Sales Order Detail
Inquiry: O6\_O6-TEST - O6 DEFAULT

Open Save SQL XML Source Display Copy Delete ?

Control Description: O6 DEFAULT
Where: O6PL.ODPN like ?QS\_PN? and O6PL.O6REQD > ?QS\_REQD? and O6PL.O6ORD# > 0

Search Parameters

Parm	Label	Type	Default	Like Column
QS_PN	Part#	WILDCARD		O6PL.ODPN
QS_REQD	QS_REQD	Date	*TODAY* - 60	

Displayed Columns: Grid Configuration
Rows Per Page: 50
Maximum Returned Rows: 10000

Database Columns
Clear Filters

Name	Entity	Description
Entity: CAPL (59 Items)		
Entity: CAPTRL (12 Items)		
Entity: CFPL (47 Items)		
Entity: DTP (827 Items)		
Entity: INVC (155 Items)		
Entity: INVCCORP (73 Items)		
Entity: INVCCORPTRL (8 Items)		
Entity: INVCTRL (9 Items)		
Entity: ISPL (224 Items)		

Displayed Columns

Column	Table	Heading	Size	Hyperlink	SQL
O6PL.O6ORD#	O6PL	Order#	80		
O6PL.O6SUFEX	O6PL	Suffix	40		
O6PL.O6ITEM	O6PL	Item	50		
O6PL.ODOQS	O6PL	Ord qty SUM	100		
O6PL.ODPN	O6PL	Product number	150		
PMPL.PMDESC	PMPL	Desc	300		
O6PL.O6WH	O6PL	Ship wh	50		
O6PL.O6REQD	O6PL	Required date	100		
O6PL.ODPRMD	O6PL	Prom date	100		
O6PL.ODNCDD	O6PL	No chg code	40		
O6PL.ODPROT	O6PL	Price prot	40		
OHPL.OHBTXY	OHPL	Sold to	70		
OHPL.OHSTKY	OHPL	Ship to	70		
SHIPCORP.CMN...	CM1PL	Name	0		

Order by

Name	Sort Direction
O6PL.O6ORD#	Ascending
O6PL.O6SUFEX	Ascending
O6PL.O6ITEM	Ascending

Group by

Name
------

# Search Criteria and Display

Division **01**
Type: Sales Order Detail
Inquiry: O6\_O6-TEST - O6 DEFAULT

**Configure Custom Inquiry**
Open Save SQL XML Source Display Copy Delete ?

Control Description: O6 DEFAULT
Where: O6PL.ODPN like ?QS\_PN? and O6PL.O6REQD > ?QS\_REQD? and SHIP.CMSTKY like ?QS\_FSTKY? and OHPL.OHINIT like ?QS\_USERID? and O6PL.O6ORD# > 0

Displayed Columns: Grid Configuration
Rows Per Page: 50
Maximum Returned Rows: 10000

Param	Label	Type	Default	Like Column
QS_REQD	QS_REQD	Date	*TODAY*-60	
QS_PN	Part#	WILDCARD		O6PL.ODPN
QS_FSTKY	Ship To Customer	WILDCARD		SHIP.CMSTKY
QS_USERID	QS_USERID	WILDCARD		OHPL.OHINIT



# Parameter Names

---

Frontier UI passes context keys between applications by standardizing query string parameter names.

Parameter names conform to standard.

QS Parameter	Description
QS_VIEW	Name of the page the query string parameters came from
QS_FORDn	Sales Order Number
QS_SUFX	Sales Order Suffix
QS_FWON	Work Order Number
QS_FSPON	Ship-to Purchase Order Number
QS_FBPON	Sold-to Purchase Order Number
QS_FRON	Requisition Order Number
QS_FSTKY	Ship-to Customer ID
QS_FBTKY	Sold-to Customer ID
QS_FPRKY	Price-as Customer ID
QS_FIVKY	Invoice-to Customer ID
QS_DIV	Division
QS_WH	Shipping Warehouse
QS_RWH	Receiving Warehouse
QS_BWH	Billing Warehouse
QS_DWH	Distribution Warehouse
QS_MWH	Manufacturing Warehouse
QS_FPN	Part Number (Product)
QS_FCPN	Customer Part Number (Product)
QS_FVPN	Vendor Part Number (Product)
QS_FVMKY	Vendor Number (ID)
QS_FBUYR	Buyer
QS_FPLNR	Planner
QS_DP	Department Code
QS_WC	Work Center
QS_MC	Machine Code
QS_FWCTR	DP+WC+MC (Combined Workcenter)
QS_FRESn	Resource Number
QS_FRUNn	Run Number (ID)
QS_FINVn	Invoice Number
QS_FBTCH	Batch Number
QS_FCHKn	Check Number
QS_FEMPn	Employee Number

QS_LOAD	Shipping Load Number
QS_DTSTART	Calendar Start Date
QS_DTEND	Calendar End Date
QS_FPSTART	Fiscal Period Start Date
QS_FPEND	Fiscal Period End Date
QS_FGLAC	General Ledger Account Number
QS_FCRRG	Credit Region
QS_FPROJ	Project Id
QS_FJRNl	Journal Number
QS_FOPRn	Operation Number
QS_FCTRCT	Contract
QS_FPCMLTn	PCM Lot Number
QS_FLOCn	Location Number
QS_FCOMMC	Commodity Code
QS_USERID	USER ID
QS_ATTR	Entity attribute
QS_ATTR_VAL	Entity attribute value
QS_ATTR_GRP	Entity attribute group
QS_TEMPLATE	Entity attribute template

# Grid Settings

Database Columns

Clear Filters

Name	Entity	Description
Entity: CAPL	(59 Items)	
Entity: CAPTRL	(12 Items)	
Entity: CFPL	(47 Items)	
Entity: DTP	(827 Items)	
Entity: INVC	(155 Items)	
Entity: INVCCORP	(73 Items)	
Entity: INVCCORPTRL	(8 Items)	
Entity: INVCTRL	(9 Items)	
Entity: ISPL	(224 Items)	
Entity: ISTR	(9 Items)	
Entity: LDPL	(73 Items)	
Entity: M1PL	(53 Items)	
Entity: MOPL	(47 Items)	
Entity: O4PL	(310 Items)	

Displayed Columns

Table	Heading	Size	Hyperlink	SQL
O6PL	Order#	80	Sales Order Detail	
O6PL	Ext sls amt	120		sum(O6PL.ODEXTs)
O6PL	Suffix	40		
O6PL	Item	50		
O6PL	Ord qty SUM	100		
O6PL	Product number	150		
PMPL	Desc	300		
O6PL	Ship wh	50		
O6PL	Required date	100		
O6PL	Prom date	100		
O6PL	No chg code	40		
O6PL	Price prot	40		
OHPL	Sold to	70		
OHPL	Ship to	70		
CM1PL	Name	0		
OHPL	User Id	80		

Order by

Name	Sort Direction
O6PL.O6ORD#	Ascending
O6PL.O6SUFx	Ascending
O6PL.O6ITEM	Ascending


Group by

Name
O6PL.ODPN
O6PL.O6WH

Rows Per Page: 50

Maximum Returned Rows: 10000

#### Database Columns

 Clear Filters

Name	Entity	Description
 Entity: CAPL (59 Items)		
 Entity: CAPTRL (12 Items)		
 Entity: CFPL (47 Items)		
 Entity: DTP (827 Items)		
 Entity: INVC (155 Items)		
 Entity: INVCCORP (73 Items)		
 Entity: INVCCORPTRL (8 Items)		
 Entity: INVCTRL (9 Items)		
 Entity: ISPL (224 Items)		
 Entity: ISTR (9 Items)		
 Entity: ISPL (224 Items)		

#### Displayed Columns

Table	Heading	Size	Hyperlink	SQL
O6PL	Order#	80	Sales Order Detail	
O6PL	Ext sls amt	120	A/P Inquiry Multi Criteria - iInquiry	
O6PL	Suffix	40	A/P Inquiry Single Criteria - iInquiry	
O6PL	Item	50	A/R Aging - iInquiry	
O6PL	Ord qty SUM	100	A/R Inquiry Multi Criteria - iInquiry	
O6PL	Product number	150	A/R Inquiry Single Criteria - iInquiry	
PMPL	Desc	300	A/R Payment History - iInquiry	
O6PL	Ship wh	50	Cash Flow Analysis - iInquiry	
O6PL	Required date	100	Configure - iConfigure	
O6PL	Prom date	100	Configure A.P.E. - SOE	
O6PL	No chg code	40	Customer Product BOM - SOE	
O6PL	Price prot	40	Customize Purchase Order Receipt Management Views - SOE	
OHPL	Sold to	70	Customize Purchase Order Receiving Views - SOE	
OHPL	Ship to	70	Customize Purchase Order Views - SOE	
CM1PL	Name	0	Customize Purchase Order Views - SOE	
OHPL	User Id	80	Customize PMA Views - SOE	

# Order by and Group by

---

## ORDER BY

- Defines the initial sequencing of the grid list by creating an SQL ORDER BY clause in the query.

## GROUP BY

- Defines an SQL group by clause which groups rows that have the same group-by column values into summary rows.

Displayed Columns						Order by	
Column	Table	Heading	Size	Hyperlink	SQL	Name	Sort Direction
O6PL.O6ORD#	O6PL	Order#	80	Sales Order Detail		O6PL.O6ORD#	Ascending
O6PL.O6EXT\$	O6PL	Ext sls amt	120		sum(O6PL.O6EXT\$)	O6PL.O6SUF	Ascending
O6PL.O6SUF	O6PL	Suffix	40			O6PL.O6ITEM	Ascending
O6PL.O6ITEM	O6PL	Item	50				
O6PL.O6OQS	O6PL	Ord qty SUM	100		sum(O6PL.O6OQS)		
O6PL.O6DPN	O6PL	Product number	150				
PMPL.PMDESC	PMPL	Desc	300				
O6PL.O6WH	O6PL	Ship wh	50				
O6PL.O6REQD	O6PL	Required date	100				
O6PL.O6PRMD	O6PL	Prom date	100				
O6PL.O6NCDD	O6PL	No chg code	40				
OHPL.O6BTY	OHPL	Sold to	70				
O6PL.O6PROT	O6PL	Price prot	40				
OHPL.O6STY	OHPL	Ship to	70				

# Virtual Data Elements

---

Available Database Columns named with the prefix “v”.

Data derived from an SQL expression.

Some of these virtual elements are predefined with an SQL expression.

SHIPCORP.vCityStZip	CM1PL	City/ST/Zip	800		trim(*TAG*.CMCITY)   ','  *TAG*.CMST    ' '   *TAG*.CMZIP
---------------------	-------	-------------	-----	--	---

# Form Configuration

Division **01**
Type: Sales Order Detail
Inquiry: O6\_O6-TEST - O6 DEFAULT

Open
Save
SQL
XML Source
Display
Copy
Delete
?

### Configure Custom Inquiry

Control Description: O6 DEFAULT  
Displayed Columns: Form Configuration  
Rows Per Page: 50  
Maximum Returned Rows: 10000

#### Form Database Columns

Clear Filters

Name	Entity	Description
Entity: CAPL (53 Items)		
Entity: CAPTRL (12 Items)		
Entity: CFPL (47 Items)		
Entity: DTP (827 Items)		
Entity: INVC (155 Items)		
Entity: INVCCORP (73 Items)		
Entity: INVCCORPTRL (8 Items)		
Entity: INVCTRL (9 Items)		
Entity: ISPL (224 Items)		
Entity: ISTR (9 Items)		
Entity: LDPL (64 Items)		

New Tab
New Caption

Order#: #####9
Item: ##9.99

PART#:

Main
Customer
Contact
Manufacturing
Shipping

Description: XXXXXXXXXXXXXXXXXXXXXXXXXXXXXXXX  
Ship wh: XX  
Prom date: XXXXXX  
Ord qty SUM: #####9  
Actual price: #####9.99  
Required ship date: XXXXXX  
Rlsd qty: #####9



# Update Form Fields

Name:	LDPL.LDCARR
Label:	Carrier
Data Type:	A
Length:	5
Decimal:	0
Read Only:	<input type="checkbox"/>
Required:	<input type="checkbox"/>
Show:	<input checked="" type="checkbox"/>
Show in Search:	<input type="checkbox"/>
Default Value:	
Tool Tip:	
Note File:	CC
Size:	100
Columns Span:	1
SQL:	
<input type="checkbox"/> Valid Values	

Ok Close

# XML Source

<Field> definitions can be re-arranged, and/or moved between <Group> definitions.

<Field> definitions can also be added and removed from the <Header> definition.

*If not done correctly, can damage it making unusable, and inaccessible.*

Division 01	Type: Sales Order Detail	Inquiry: O6_O6-TEST - O6 DEFAULT								
Configure Custom Inquiry			Open	Save	SQL	XML Source	Display	Copy	Delete	?

# XML Source

Edit XML Source: O6\_O6-TEST

Save Refresh Close

```
<?xml version="1.0" ?>

<!-- iProducts Masters File - Version 3.1.0.0This file define the content, sorting, and other user preferences for a specific purchasing configuration. -->

<Resource perpage="50" maxretrows="10000" dataModel="O6" viewreadonly="N" >

  <SearchTemplate>

O6PL.ODPN like ?QS_PN? and O6PL.O6REQD >?QS_REQD? and SHIP.CHSTKY like ?QS_FSTKY? and OHPL.OHINIT like ?QS_USERID? and O6PL.O6ORD# > ?</SearchTemplate>

  <Grid>

    <Field name="O6PL.O6ORD#" table="O6PL" tag="O6PL" label="Order#" show="Y" type="D" datatype="N" len="08" dec="0" size="100" colsize="80" req="N" sysreq="N" readonly="N" sysreadonly="N" default="" nf="" bu="" lookup="" neg="N" mixedcase="N" showsearch="N" cspan="1" tooltip="" format="" hlink="SOE_soe_dtl_activity" start="0" sql="" >

    </Field>

    <Field name="O6PL.O6EXTS" table="O6PL" tag="O6PL" label="Ext sls amt" show="Y" type="D" datatype="N" len="15" dec="2" size="120" colsize="120" req="N" sysreq="N" readonly="N" sysreadonly="N" default="" nf="" bu="" lookup="" neg="N" mixedcase="N" showsearch="N" cspan="1" tooltip="" format="" hlink="" start="0" sql="" >

    </Field>

    <Field name="O6PL.O6SUF" table="O6PL" tag="O6PL" label="Suffix" show="Y" type="D" datatype="N" len="02" dec="0" size="100" colsize="40" req="N" sysreq="N" readonly="N" sysreadonly="N" default="" nf="" bu="" lookup="" neg="N" mixedcase="N" showsearch="N" cspan="1" tooltip="" format="" hlink="" start="0" sql="" >

    </Field>

    <Field name="O6PL.O6ITEM" table="O6PL" tag="O6PL" label="Item" show="Y" type="D" datatype="N" len="05" dec="2" size="100" colsize="50" req="N" sysreq="N" readonly="N" sysreadonly="N" default="" nf="" bu="" lookup="" neg="N" mixedcase="N" showsearch="N" cspan="1" tooltip="" format="" hlink="" start="0" sql="" >

    </Field>

    <Field name="O6PL.O6OQS" table="O6PL" tag="O6PL" label="Ord qty SUM" show="Y" type="D" datatype="N" len="10" dec="0" size="100" colsize="100" req="N" sysreq="N" readonly="N" sysreadonly="N" default="" nf="" bu="" lookup="" neg="N" mixedcase="N" showsearch="N" cspan="1" tooltip="" format="" hlink="" start="0" sql="" >

    </Field>

    <Field name="O6PL.ODPN" table="O6PL" tag="O6PL" label="Product number" show="Y" type="D" datatype="A" len="15" dec="0" size="100" colsize="150" req="N" sysreq="N" readonly="N" sysreadonly="N" default="" nf="" bu="" lookup="" neg="N" mixedcase="N" showsearch="N" cspan="1" tooltip="" format="" hlink="" start="0" sql="" >

  </Grid>

</Resource>
```

# SQL

---

Displays the generated SQL in the browser.

Copy/Paste the SQL into an iSeries SQL facility (i.e. Client Access SQL scripts or STRSQL 5250 application).

Replace the question marks (?) with valid search arguments and execute the script.

Division 01	Type: Sales Order Detail	Inquiry: O6_O6-TEST - O6 DEFAULT								
<b>Configure Custom Inquiry</b>			Open	Save	SQL	XML Source	Display	Copy	Delete	?

```
SELECT O6PL.O6ORD#, O6PL.OEXT$, O6PL.O6SUF, O6PL.O6ITEM, O6PL.ODOQS,
O6PL.ODPN, PMPL.PMDESC, O6PL.O6WH, O6PL.O6REQD, O6PL.ODPRMD, O6PL.ODNCDD,
OHPL.OHBTY, O6PL.ODPROT, OHPL.OHSTY, SHIPCORP.CMNAME, OHPL.OHINIT, O6PL.ODARTL, O6PL.ODRELQ,
SHIPCORP.C1STY, SHIPCORP.CMLNE1, SHIPCORP.CMLNE2, SHIPCORP.CMLNE3, SHIPCORP.CMZIP, SHIPCORP.CMCITY, SHIPCORP.CMST,
SHIPCORP.CMCTRY, SHIP.CMCSNM, CAPL.CANAME, CAPL.CATEL, CAPL.CAEMAL, CAPL.CAFAX, CAPL.CATITL, CAPL.CANOTE, MOPL.MOMO,
MOPL.MOPRTD, MOPL.MOTYP, MOPL.MOGLAC, MOPL.MOCMT, M1PL.M1STAT, M1PL.M1PLNR, M1PL.ML1SS, M1PL.ML1DD, LDPL.LDLOAD, LDPL.LDDOCK,
LDPL.LDTRLR, LDPL.LDSHPD, LDPL.LDWGT, LDPL.LDCUBE, LDPL.LDCTNS, LDPL.LDSTAT, LDPL.LDCARR,
O6PL.O6ORD# || ' ' || O6PL.O6SUF || ' ' || O6PL.O6ITEM
AS rowID FROM FRNCNS041.O6PL AS O6PL LEFT JOIN FRNCNS041.O4PL AS O4PL ON
(O4PL.O4ORD# = O6PL.O6ORD# and O4PL.O4SUF = O6PL.O6SUF) LEFT JOIN FRNCNS041.LDPL AS LDPL ON
(LDPL.LDLOAD = O6PL.O6LOAD) LEFT JOIN FRNCNS041.MOPL AS MOPL ON (MOPL.MOMO = (O6PL.O6ORD# + (INTEGER(O6PL.O6ITEM) * .001)))
LEFT JOIN FRNCNS041.PMPL AS PMPL ON (PMPL.PMPART = O6PL.ODPN) LEFT JOIN FRNCNS041.OHPL AS OHPL ON (OHPL.OHORD# = O4PL.O4ORD#)
LEFT JOIN FRNCNS041.M1PL AS M1PL ON (M1PL.M1ON = MOPL.MOMO) LEFT JOIN FRNCNS041.CAPL AS CAPL ON (CAPL.CADIV = OHPL.OHDIV AND CAPL.CAMAST =
OHPL.OHSTY AND CAPL.CAUSR = OHPL.OHINIT) LEFT JOIN FRNCNS041.CMPL AS SHIP ON (SHIP.CMSTY = OHPL.OHSTY AND SHIP.CMDIV = OHPL.OHDIV)
LEFT JOIN FRNCNS041.CM1PL AS SHIPCORP ON (SHIPCORP.C1STY = OHPL.OHSTY) WHERE O6PL.ODPN like ? and O6PL.O6REQD >? and SHIP.CMSTY like ?
and OHPL.OHINIT like ? and O6PL.O6ORD# > 0 ORDER BY O6PL.O6ORD#, O6PL.O6SUF, O6PL.O6ITEM FETCH FIRST 10000 ROWS ONLY
```



---

# Displaying Custom Inquiries

---

# Welcome to **Frontier**

SELECT AN APPLICATION

Select division: 01 ▼

☒ set as default

FRN041C | [Logout](#)



**Sales**



**Distribution**



**Returns and Service**



**Purchasing**



**Customer**



**Accounts Receivable**



**Attribute Management**



**Vendor**



**Accounts Payable**



**Data Management**



**Inventory Management**



**Manufacturing**



**General Ledger**



**PCM Cache/Debug**



**CAD Flow**



**SVG**



**Application Configuration**



**System Administration**

System: herbert1

Data Library: FRNCNS041

© 2021 Friedman Corporation

[About iProducts](#)  
 Friedman Corporation

- Configure Accounts Payable Views
- Configure Accounts Payable Payment Views
- Configure Accounts Receivable Controls
- Configure Accounts Receivable Views
- Configure General Ledger Controls
- Configure iDispatch Execution
- Configure iDispatch Planning
- Configure iSchedule
- Configure Load/Capacity View
- Configure iService Schedule
- Configure Master File Views
- Configure Master File Logs
- Configure Menus
- Customize Purchase Order Views
- Customize Purchase Order Receiving Views
- Customize Purchase Order Receipt Management Views
- Customize Sales Order Views
- Configure Sales Order Logs
- Configure Inventory Issues and Receipts
- Configure Work Orderless Reporting
- Configure Workorder Reporting
- Configure Inventory Stock Transfers
- Configure Line Menus
- Customize RMA Views
- Configure Custom Inquiries**
- Display Custom Inquiry



Friedman Corporation
FRN041C | Logout

Frontier:
Home
Manufacturing
Sales
Distribution
Attribute Management
Inventory Management
Purchasing
General Ledger

QS\_REQD: 06/11/2021
Part#: SS.PCM
Ship To Customer: SSCUST
QS\_USERID: \*
Go

06 DEFAULT
Type: Sales Order Detail
Inquiry: O6\_O6-TEST - O6 DEFAULT
Open

Clear Filters
Spreadsheet

Order#	Ext sls amt	Suffix	Item	Ord qty SUM	Product number	Desc	Ship wh	Required
13118422	137.45	0	1.00	1	SS.PCM	SS.PCM	01	04/22/2
13118457	137.45	0	1.00	1	SS.PCM	SS.PCM	01	04/22/2
13118458	137.45	0	1.00	1	SS.PCM	SS.PCM	01	04/22/2
13118459	137.45	0	1.00	1	SS.PCM	SS.PCM	01	04/22/2
13118515	137.45	0	1.00	1	SS.PCM	SS.PCM	01	04/22/2
13118516	137.45	0	1.00	1	SS.PCM	SS.PCM	01	04/22/2
13118517	137.45	0	1.00	1	SS.PCM	SS.PCM	01	04/22/2
13118617	137.45	0	1.00	1	SS.PCM	SS.PCM	01	04/22/2
13118618	137.45	0	1.00	1	SS.PCM	SS.PCM	01	04/22/2
13118620	137.45	0	1.00	1	SS.PCM	SS.PCM	01	04/22/2
13118621	137.45	0	1.00	1	SS.PCM	SS.PCM	01	04/22/2
13118622	137.45	0	1.00	1	SS.PCM	SS.PCM	01	04/22/2
13118672	137.45	0	1.00	1	SS.PCM	SS.PCM	01	04/22/2
13118676	137.45	0	1.00	1	SS.PCM	SS.PCM	01	04/22/2
13124140	1.00	0	1.00	1	SS.PCM	SS.PCM	01	04/22/2
13124151	1.00	0	1.00	1	SS.PCM	SS.PCM	01	04/22/2
13124152	1.00	0	1.00	1	SS.PCM	SS.PCM	01	04/22/2
13124158	1.00	0	1.00	1	SS.PCM	SS.PCM	01	04/22/2

Order#: 13118422
Item: 1.00
PART#: SS.PCM

Main
Customer
Contact
Manufacturing
Shipping

Description: SS.PCM  
Ship wh: 01  
Prom date: 04/22/2022  
Ord qty SUM: 1.000  
Actual price: 178.51  
Required ship date: 04/22/2022  
Rlsd qty: 0.000

Page 1 of 1
Displaying records 1 - 18 of 18
Ready

Part#: SKATEPIN

QS\_REQD: 10/07/2021



Go

## O6 DEFAULT

Type: Sales Order Detail

Inquiry: DEFAULT

Clear Filters

Spreadsheet

<input type="checkbox"/>	Order#	Suffix	Item	Ord qty SUM	Product number	Desc
<input checked="" type="checkbox"/>	55,578,203	0	1.00	30	SKATEPIN	SKATEPIN
<input type="checkbox"/>	55,578,204	0	1.00	100	SKATEPIN	SKATEPIN
<input type="checkbox"/>	55,578,211	0	1.00	1,000	SKATEPIN	SKATEPIN

Order#: 55578203

Item: 1.00

Main

Customer

Contact

Manufacturing

Shipping

Description: SKATEPIN

Ship wh: 01

Prom date: 10/20/2021

Ord qty SUM: 30

Actual price: 25.00

Required ship date: 10/20/2021

Rlsd qty: 30

## Excel Spread Sheet

Please wait until you are prompted to Open or Save the spreadsheet.

Close

	A	B	C	D	E	F	G	H	I	J	K	L	M
1	Order#	Suffix	Item	Ord qty SUM	Product number	Desc	Ship wh	Required date	Prom date	No chg code	Price prot	Sold to	Ship to
2	55,578,203	0	1	30	SKATEPIN	SKATEPIN	01	10/20/2021	10/20/2021		Y	JCFL	JCFL
3	55,578,204	0	1	100	SKATEPIN	SKATEPIN	01	10/20/2021	10/20/2021		Y	JCFL	JCFL
4	55,578,211	0	1	1,000	SKATEPIN	SKATEPIN	01	10/20/2021	10/20/2021		Y	JCFL	JCFL

Friedman Corporation
FRN041C | Logout
Frontier:
Home
Application Configuration
Sales
Purchasing
Manufacturing
Inventory Management
Data Management
Accounts Payable
Accounts Receivable

QS\_REQD: 06/11/2021
Part#: SS.PCM
Ship To Customer: SSCUST
QS\_USERID: \*
Go

O6 DEFAULT
Type: Sales Order Detail
Inquiry: O6\_O6-TEST - O6 DEFAULT
Open
?

Clear Filters
Spreadsheet

Order#	Ext sls amt	Suffix	Item	Order#	Ext sls amt	Suffix	Item	Order#	Ext sls amt	Suffix	Item
13118422	137.4			13118422	137.4			13118422	137.4		
13118457	137.4			13118457	137.4			13118457	137.4		
13118458	137.4			13118458	137.4			13118458	137.4		
13118459	137.4			13118459	137.4			13118459	137.4		
13118515	137.4			13118515	137.4			13118515	137.4		
13118516	137.4			13118516	137.4			13118516	137.4		
13118517	137.45	0	1.00	13118517	137.45	0	1.00	13118517	137.45	0	1.00
13118617	137.45	0	1.00	13118617	137.45	0	1.00	13118617	137.45	0	1.00
13118618	137.45	0	1.00	13118618	137.45	0	1.00	13118618	137.45	0	1.00
13118620	137.45	0	1.00	13118620	137.45	0	1.00	13118620	137.45	0	1.00
13118621	137.45	0	1.00	13118621	137.45	0	1.00	13118621	137.45	0	1.00
13118622	137.45	0	1.00	13118622	137.45	0	1.00	13118622	137.45	0	1.00
13118672	137.45	0	1.00	13118672	137.45	0	1.00	13118672	137.45	0	1.00
13118676	137.45	0	1.00	13118676	137.45	0	1.00	13118676	137.45	0	1.00
13124140	1.00	0	1.00	13124140	1.00	0	1.00	13124140	1.00	0	1.00
13124151	1.00	0	1.00	13124151	1.00	0	1.00	13124151	1.00	0	1.00
13124152	1.00	0	1.00	13124152	1.00	0	1.00	13124152	1.00	0	1.00
13124158	1.00	0	1.00	13124158	1.00	0	1.00	13124158	1.00	0	1.00

Columns
Filters

☒ Order#
☒ Ext sls amt
☒ Suffix
☒ Item
☒ Ord qty SUM
☒ Product number
☒ Desc
☒ Ship wh
☒ Required date
☒ Prom date
☒ No chg code
☒ Sold to
☒ Price prot
☒ Ship to
☒ Name
☒ User Id
☒ City/ST/Zip

Order#:
Item:
PART#:

Main
Customer
Contact
Manufacturing
Shipping

Description:
Ship wh:
Prom date:
Ord qty SUM:
Actual price:
Required ship date:
Rlsd qty:

# O6 DEFAULT

Type: Sales Order Detail

Inquiry: O6\_O6-TEST - O6 DEFAULT

Open

Clear Filters

Spreadsheet

Order#	Ext sls amt	Suffix	Item	Ord qty SUM	Product number	Desc
<a href="#">13118422</a>	137.4	A ↓	Sort Ascending	1	SS.PCM	SS.PCM
<a href="#">13118457</a>	137.4	Z ↓	Sort Descending	1	SS.PCM	SS.PCM
<a href="#">13118458</a>	137.4	A ↓	Sort Descending	1	SS.PCM	SS.PCM
<a href="#">13118459</a>	137.4	Columns		1	SS.PCM	SS.PCM
<a href="#">13118515</a>	137.4	Filters				
<a href="#">13118516</a>	137.4					
<a href="#">13118517</a>	137.45	0	1.00			
<a href="#">13118617</a>	137.45	0	1.00			
<a href="#">13118618</a>	137.45	0	1.00			
<a href="#">13118620</a>	137.45	0	1.00	1	SS.PCM	SS.PCM
<a href="#">13118621</a>	137.45	0	1.00	1	SS.PCM	SS.PCM
<a href="#">13118622</a>	137.45	0	1.00	1	SS.PCM	SS.PCM
<a href="#">13118672</a>	137.45	0	1.00	1	SS.PCM	SS.PCM
<a href="#">13118676</a>	137.45	0	1.00	1	SS.PCM	SS.PCM
<a href="#">13124140</a>	1.00	0	1.00	1	SS.PCM	SS.PCM
<a href="#">13124151</a>	1.00	0	1.00	1	SS.PCM	SS.PCM
<a href="#">13124152</a>	1.00	0	1.00	1	SS.PCM	SS.PCM
<a href="#">13124158</a>	1.00	0	1.00	1	SS.PCM	SS.PCM

Order#:

Item:

PART#:

Main

Customer

Contact

Manufacturing

Shipping

Description:

Ship wh:

Prom date:


Ord qty SUM:

Actual price:



Required ship

date:

Rlsd qty:

Entered: 11/06/2021  Product: \* Job name: MSES Quote: CRM P

**Demo Inquiry** Type: Sales Order Detail Inquiry: 06\_0

 Clear Filters  Spreadsheet						
<input type="checkbox"/>	Entered date	Order#	Product number	Program	Product family	Job name
<input checked="" type="checkbox"/>	11/16/21	<a href="#">55578253</a>	HC			
<input type="checkbox"/>	11/18/21	<a href="#">55578273</a>	HC			
<input type="checkbox"/>	11/18/21	<a href="#">55578274</a>	HC			
<input type="checkbox"/>	11/18/21	<a href="#">55578275</a>	HC			
<input type="checkbox"/>	11/18/21	<a href="#">55578276</a>	HC			
<input type="checkbox"/>	11/29/21	<a href="#">55578280</a>	FARMERTABLE			
<input type="checkbox"/>	11/30/21	<a href="#">55578285</a>	HC			
<input type="checkbox"/>	11/30/21	<a href="#">55578287</a>	HC			
<input type="checkbox"/>	11/30/21	<a href="#">55578289</a>	HC			
<input type="checkbox"/>	11/30/21	<a href="#">55578291</a>	HC			
<input type="checkbox"/>	11/30/21					

**Order#:** 55578253 **Item:**

**Main** **Customer** **Manufacturing**

**Description:** HONEYCOMB SHADE

**Ship wh:** 01

**Prom date:** 11/16/2021

**Ord qty SUM:** 5

**Required ship date:** 11/16/2021

**Config:** ,MIST,STD LIFT

---

# Questions?

---