

2025 YEAR END CLOSE PHYSICAL INVENTORY FRONTIER PROCESS



Julie Wright | November 20th, 2025

***Caracal
Keithrafferty***

Business Developer

ckeithrafferty@friedmancorp.com

(847) 834-4854



***Julie
Wright***

Internal Support Consultant

jwright@friedmancorp.com

(847) 948-7180 x7



- Physical Inventory

- Overview
- Setup
- Process

PHYSICAL INVENTORY MENU

```
PIMENU                                Physical Inventory Menu                                11/12/25
Select one of the following:           09:58:11

      * Online Options *
73. Inventory Segment Maint      PM73
74. Physical Inventory Maint     PI74
75. Inventory by Location Maint  LL75
77. Location Master Maint       LL77
78. Inventory Balance by Wh Inq PM74

      * Inventory Print Options *
107. By Wh, Type and Product    PIR007
108. By Tag Number              PIR008
109. Missing Tag Register       PIR009

      * Set Up Inventory Process *
11. Clear Tags by Warehouse     PIR011
100. Load Beginning Balances   PIR001
101. Gen WIP Count Tickets      PIR001A
102. List Curr Inv Tag Values   PIR002

      * Net Balances *
103. Net Curr Tags from Beg     PIR003
104. Net Tags in Desc Value     PIR004

      * Final Net Update *
106. Upd Net Recs to IS/AF Files
                                   PIR006

      * Yearly Jobs *
105. Clear Cur & Prev YTD Inv Seg
                                   PIR005

      * Parameters *
200. Next Tag & Auto Assign      PITAGH

      * System Functions *
900. System Functions Menu      SYMENU
OFF. Sign Off

Selection or command
==>

F3=Exit  F4=Prompt

User ECS041C  Data library ECSDTA041C
```

Set up Location Master

- LL77
- Set locations to omit from physical inventory counts

Friedman Corporation ECS041C | Logout **Frontier:** Home Inventory Management Sales Distribution Data Management

JW

Location Maintenance

Warehouse: J1 Location: * Go

Delete Clear Filters

Warehouse	Location	Available to Promise	Location Type	Include in physical
<input checked="" type="checkbox"/>	J1 JWLOC2	false	2	true
<input type="checkbox"/>	J1 JWLOC3	false	4	true
<input type="checkbox"/>	J1 1	false	1	true
<input type="checkbox"/>	J1 2	false	2	false
<input type="checkbox"/>	J1 3	false	3	true
<input type="checkbox"/>	J1 4	false	4	true
<input type="checkbox"/>	J1 5	false	FG	true
<input type="checkbox"/>	J1 888888...	false		false

Warehouse: J1 Location: JWLOC2

Main

Available to Promise: ☐

Location Type: 2

Warehouse Zone:

Include in physical: ☒

Nettable for MRP: ☒

Sequence Number: 1.00

Length: 0.00 Width: 0.00 Height: 0.00

Max Capacity Pieces: Max Capacity Volume:

Number of Picks: 0

Last picked date:


ECS041C LOCATION MASTER MAINTENANCE

Warehouse J1 Location JWLOC2

Avail to promise? -

Location type 2

Warehouse zone

Include in physical? Y 

Nettable for MRP? Y

Sequence number 1.00

Length Location Maximum capacity

Width Pieces

Height Volume

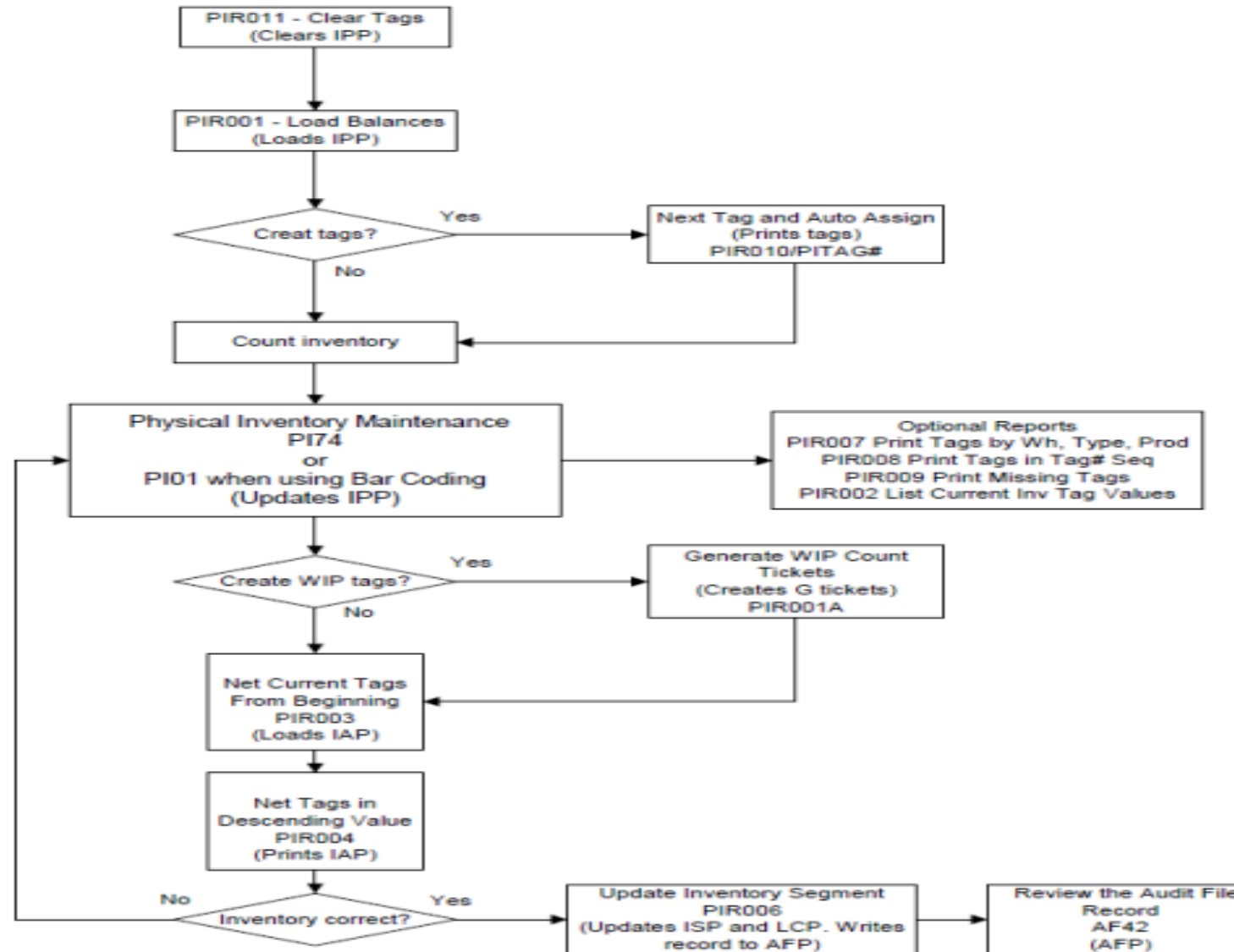
Number of picks

Last picked date 0/00/00

LL77 Warehouse J1 Location JWLOC2 Mode

F3=Exit F10=Menu Bar

PHYSICAL INVENTORY PROCESS OVERVIEW FLOWCHART



Clear tags

- PIMENU option 11
- Deletes IPP file

Tip: Before starting a new physical inventory, it might be best to look at clearing any existing counts in the IAP and IPP files that were left in process, which can be done by clearing both of those files.

```
ECS041C                                CLEAR TAGS BY WAREHOUSE                                11/12/25
                                                                                               11:58:41

Enter a warehouse to clear tags.

      Warehouse  01  (** for ALL warehouses)

PIRC
F3=Submit and exit  F12=Cancel
```

Load beginning balances

- PIMENU option 100
- Creates IPP records for on-hand balances by product and lot and/or location

NOTE: This job will submit on hold and must be released

ECS041C

11/12/25

11:59:29

CREATE PHYSICAL INVENTORY FILE WITH BEGINNING BALANCES

Enter the warehouse to be reported on —
(blank for ALL warehouses)

Enter the inventory type to be selected —
(blank for ALL inventory types)

Press ENTER to record your selection, even if both parameters are left blank.

F3=Submit and exit F12=Cancel

Generate tags

- PIMENU option 200
- Assign starting tag number
- Option to assign tag, assign and generate, or not assign
- Option to generate blank tags (found inventory)
- Print tags

```
ECS041C                                NEXT TAG NUMBER AND          11/12/25
                                         AUTOMATIC ASSIGNMENT OF TAG NUMBER 12:00:53

This will change the next tag number (PITAG#).  All tag records are
sequentially numbered from the starting value given in this data area.

Next tag number                        000001

This will allow the option of having the tag numbers automatically
or manually assigned (PITGAU).

Automatically assign tag numbers?      Y  (Y=Auto assign
                                           G=Auto assign & generate
                                           N=Do not assign)

Number of blank tags to print:         003
Submit job for printing tag numbers?   Y  (Y or N)

F3=Exit
```

- Tag print program
 - If print tag option is Y, additional job will run to print tags
 - One tag per page

ECS041C

11/12/25
12:16:30

Print Physical Inventory Tags In Wh, Loc, Part, Lot

Enter the warehouse to be reported on _____
(blank for ALL warehouses)

Enter the inventory type to be selected _____
(blank for ALL inventory types)

Press ENTER to record your selection, even if both parameters are left blank.

```

Program:  PIR010                FRONTIER 4.1 EC PROGRAM - V4.1 ECS041C                Date: 11/20/25    Page:
                                PHYSICAL INVENTORY CURRENT TAGS BY WH, LOC, PN, LOT    Time:  7:47:31
WH  TAG # CTL  PRODUCT NUMBER  LOCATION  LOT NBR      PIECES      DESCRIPTION
J1   1      JW DIM                _____  JW DIMENSIONS TEST
Program:  PIR010                FRONTIER 4.1 EC PROGRAM - V4.1 ECS041C                Date: 11/20/25    Page:
                                PHYSICAL INVENTORY CURRENT TAGS BY WH, LOC, PN, LOT    Time:  7:47:31
WH  TAG # CTL  PRODUCT NUMBER  LOCATION  LOT NBR      PIECES      DESCRIPTION
J1   2      JW MAKE                _____  JW TST MAKE PART
Program:  PIR010                FRONTIER 4.1 EC PROGRAM - V4.1 ECS041C                Date: 11/20/25    Page:
                                PHYSICAL INVENTORY CURRENT TAGS BY WH, LOC, PN, LOT    Time:  7:47:31
WH  TAG # CTL  PRODUCT NUMBER  LOCATION  LOT NBR      PIECES      DESCRIPTION
  
```

Counts

PI74 (or Bar Code)

- If assign tag option was set to generate, tag counts of 0 are in the system
- If assign tag option was set to assign only, tags must manually be entered

NOTE: Physical inventory requires a count to be entered for every product and lot/location combination in the IPP file. Not entering a count will set inventory on-hand to 0.

```
ECS041C          PHYSICAL INVENTORY MAINTENANCE          11/12/25
                                                         12:17:11

Required selection criteria:

      Mode          ADD      (TAG, ADD, PN, LOC)
      Warehouse           

Optional selection criteria: (blank for all records)

      Control point       
      Tag number          
      Product number       
      Location            
      Date          111225

PI74
F3=Exit  F10=Menu Bar
```

PHYSICAL INVENTORY PROCESS

Counts

- System-assigned tags or manually added tags
- ADD mode
 - Requires WH and Control Date

```

ECS041C          PHYSICAL INVENTORY MAINTENANCE          OK TO ADD          11/20/25
                                                         08:09:23

  Tag # C S Wh      Count  UM  Product      Loc      Seq #  Lot
  1      -  J1      40      JW B      JWLOC2
W0#      Tag class      Who      Date      0/00/00
Expd      0/00/00

  2      -  J1      10      JW DIM
W0#      Tag class      Who      Date      0/00/00
Expd      0/00/00

W0#      Tag class      Who      Date      0/00/00
Expd      0/00/00

W0#      Tag class      Who      Date      0/00/00
Expd      0/00/00

W0#      Tag class      Who      Date      0/00/00
Expd      0/00/00

W0#      Tag class      Who      Date      0/00/00
Expd      0/00/00

W0#      Tag class      Who      Date      0/00/00
Expd      0/00/00 +

      Mode ADD Warehouse J1 Control point _ Tag #
PI74 Product      Location      Date 11/20/25
F2=Select F3=Exit F13=IUM F10=Menu Bar
  
```

PHYSICAL INVENTORY PROCESS

Counts

- System-generated tags or manually added tags
- TAG mode
 - Requires WH and Date

```

ECS041C                                PHYSICAL INVENTORY MAINTENANCE                                11/20/25
                                                                                               08:13:53
Tag # C S Wh      Count  UM  Product          Loc      Seq #  Lot
      B J1      20.000  EA  JW B          JWLOC2
W0#
      B J1      20.000  EA  JW B          JWLOC3
W0#
      1 _  J1      40.000  EA  JW B          JWLOC2
W0#
      1  H J1      40.000  EA  JW B          1
W0#
      B J1      40.000- EA  JW DIM
W0#
      2 _  J1      10.000  EA  JW DIM
W0#
      Mode PN  Warehouse J1  Control point _  Tag #
PI74 Product
F2=Select F3=Exit F13=IUM F10=Menu Bar
  
```

Tag #	C	S	Wh	Count	UM	Product	Loc	Seq #	Lot	Date	Expd
W0#	B	J1		20.000	EA	JW B	JWLOC2			11/20/25	0/00/00
W0#	B	J1		20.000	EA	JW B	JWLOC3			11/20/25	0/00/00
W0#	1	_	J1	40.000	EA	JW B	JWLOC2			11/20/25	0/00/00
W0#	1	H	J1	40.000	EA	JW B	1			11/20/25	0/00/00
W0#	B	J1		40.000-	EA	JW DIM				11/20/25	0/00/00
W0#	2	_	J1	10.000	EA	JW DIM				11/20/25	0/00/00

Mode PN Warehouse J1 Control point _ Tag # _
 PI74 Product _ Location _ Date 11/20/25
 F2=Select F3=Exit F13=IUM F10=Menu Bar

Counts – Bar Code

PI01

- Will find system generated tag and add the count to that tag
- If assigned only tags, this will add a new sequential tag

```

Wh  01 Tag  1568
Product
DVA001.LOR2
Lot #

Location
88888888
Count
  
UM  EA
OK TO PROCESS
PI03
  
```

PI03

- Used when system generated tags
- Will find matching product and lot and/or location assigned to tag

```

Wh    Lot #
01    _____
Product
MRG.MAKE _____

Count          UM
  100.000      0Z
  Location
  _____

PI01 RECOUNT
  
```

WIP count tickets

- Used to account for material consumed by work orders but not yet backflushed

```
ECS041C                PHYSICAL INVENTORY MAINTENANCE                11/20/25
                                                                    08:32:43

Required selection criteria:

      Mode                ADD      (TAG, ADD, PN, LOC)
      Warehouse           J1

Optional selection criteria: (blank for all records)

      Control point       W
      Tag number          _____
      Product number      JW TST _____
      Location            _____
      Date                11/20/25

PI74
F3=Exit  F10=Menu Bar
```

WIP count tickets

- Enter un-reported work orders by sequence

ECS041C **PHYSICAL INVENTORY MAINTENANCE** **OK TO ADD** **11/20/25 08:45:02**

Tag #	C	S	Wh	Count	UM	Product	Loc	Seq #	Lot
4	W	J1		10		JW TST		10	
W0#	60155969	000					Who		Date
						Tag class			Expd
W0#							Who		Date
						Tag class			Expd
W0#							Who		Date
						Tag class			Expd
W0#							Who		Date
						Tag class			Expd
W0#							Who		Date
						Tag class			Expd
W0#							Who		Date
						Tag class			Expd

Mode **ADD** Warehouse **J1** Control point **W** Tag # **PI74** Product **JW TST** Location **11/20/25**
 F2=Select F3=Exit F13=IUM F10=Menu Bar

ECS041C

GENERATE WIP (G) COUNT TICKETS

Enter the warehouse to be reported on **J1**
 (blank for ALL warehouses)

Enter the inventory type to be selected **_**
 (blank for ALL inventory types)

Press ENTER to record your selection, even if both parameters are left blank.

F3=Submit and exit F12=Cancel

- PIMENU option 101
- Generates counts for materials

PHYSICAL INVENTORY PROCESS

WIP count tickets

- G tickets assigned for materials that should be consumed by the work order up to the sequence entered

```

ECS041C                                PHYSICAL INVENTORY MAINTENANCE                                11/20/25
                                                                                               08:42:35
Tag # C S Wh      Count  UM  Product      Loc      Seq #  Lot
3 W   J1      10.000  EA   JW TST
WO# 60155968.000      JW TEST PART      Who ECS041C      Date 11/20/25
                               Tag class      Expd 0/00/00
3 W G J1      30.000  EA   JW TST      88888888
WO# 60155968.000      JW TEST PART      Who ECS041C      Date 11/20/25
                               Tag class      Expd 0/00/00
4 W   J1      10.000  EA   JW TST
WO# 60155969.000      JW TEST PART      Who ECS041C      Date 11/20/25
                               Tag class      Expd 0/00/00
4 W H J1      10.000  EA   JW TST
WO# 60155969.000      JW TEST PART      Who ECS041C      Date 11/20/25
                               Tag class      Expd 0/00/00
4 W G J1      10.000  EA   JW TST      88888888
WO# 60155969.000      JW TEST PART      Who ECS041C      Date 11/20/25
                               Tag class      Expd 0/00/00
      B J1      1.000- SF   JW UM      00069200
WO#      JW UM TEST PART      Who BAS      Date 11/20/25
                               Tag class      Expd 0/00 +
Mode PN Warehouse J1 Control point W Tag #
PI74 Product JW TST Location Date 11/20/25
F2=Select F3=Exit F13=IUM F10=Menu Bar
  
```

Counts

■ Tag status

- B = Beginning balance
- G = WIP count
- H = Historical count
- Blank = Current count

■ Tag class

- User-defined

ECS041C
PHYSICAL INVENTORY MAINTENANCE
11/20/25
08:50:09

Tag	#	C	S	Wh	Count	UM	Product	Loc	Seq #	Lot
	3	W		J1	10.000	EA	JW TST		10.00	
WO#	60155968.000						JW TEST PART	Who ECS041C	Date 11/20/25	
							Tag class JW1		Expd 0/00/00	
	3	W	G	J1	30.000	EA	JW TST	88888888		
WO#	60155968.000						JW TEST PART	Who ECS041C	Date 11/20/25	
							Tag class		Expd 0/00/00	
	4	W		J1	10.000	EA	JW TST		10.00	
WO#	60155969.000						JW TEST PART	Who ECS041C	Date 11/20/25	
							Tag class		Expd 0/00/00	
	4	W	H	J1		EA	JW TST		10.00	
WO#	60155969.000						JW TEST PART	Who ECS041C	Date 11/20/25	
							Tag class		Expd 0/00/00	
	4	W	G	J1		EA	JW TST	88888888		
WO#	60155969.000						JW TEST PART	Who ECS041C	Date 11/20/25	
							Tag class		Expd 0/00/00	
		B		J1	1.000-	SF	JW UM			00069200
WO#							JW UM TEST PART	Who BAS	Date 11/20/25	
							Tag class		Expd 0/00 +	

Mode PN Warehouse J1 Control point W Tag #
 PI74 Product JW TST Location Date 11/20/25
 F2=Select F3=Exit F13=IUM F10=Menu Bar

Optional Reports

PIR007

- Sorts by location, lot, and part number
- Shows current count and value of tags

Program: PIR007											
FRONTIER 4.0 EC PROGRAM - V4.0 ECS040C											
PHYSICAL INVENTORY CURRENT TAGS BY WH, CTL, PN											
WH	TAG #	C	PRODUCT NUMBER	OPER#	WO#	LOC	LOT NBR	PIECES	ACCOUNT#	MATERIAL	
01	1032		MRG.ACTUAL								
				IUM			EA WH UM	.000		.00	
01	1033		MRG.ADDER				00035239	10.000	MISC		.00
				IUM	10.000		EA WH UM	.000		.00	
01	1034		MRG.ADDER				00045493	10.000	MISC		.00
				IUM	10.000		EA WH UM	.000		.00	
01	1035		MRG.ADDER				00047338	10.000	MISC		.00
				IUM	10.000		EA WH UM	.000		.00	
01	1036		MRG.ADDER				00048079	10.000	MISC		.00
				IUM	10.000		EA WH UM	.000		.00	
01	1037		MRG.AFM				00050851	200.000	MISC		15000.00
				IUM	200.000		EA WH UM	.000		2000.00	.00
01	1038		MRG.AFM				00051164	200.000	MISC		15000.00
				IUM	200.000		EA WH UM	.000		2000.00	.00

Program: PIR008											
FRONTIER 4.0 EC PROGRAM - V4.0 ECS040C											
PHYSICAL INVENTORY CURRENT TAGS IN TAG# ORDER											
WH	TAG #	C	PART#	OPER#	WO#	BIN #	LOT #	PIECES	GL ACCT	MATL	
01	1032		MRG.ACTUAL								
				IUM			EA WH UM	.000		.00	
01	1033		MRG.ADDER				00035239	10.000	MISC		.00
				IUM	10.000		EA WH UM	.000		.00	
01	1034		MRG.ADDER				00045493	10.000	MISC		.00
				IUM	10.000		EA WH UM	.000		.00	
01	1035		MRG.ADDER				00047338	10.000	MISC		.00
				IUM	10.000		EA WH UM	.000		.00	
01	1036		MRG.ADDER				00048079	10.000	MISC		.00
				IUM	10.000		EA WH UM	.000		.00	
01	1037		MRG.AFM				00050851	200.000	MISC		15000.00
				IUM	200.000		EA WH UM	.000		2000.00	.00
01	1038		MRG.AFM				00051164	200.000	MISC		15000.00
				IUM	200.000		EA WH UM	.000		2000.00	.00

PIR008

- Sorts by tag number
- Shows current value of tags

Optional Reports

PIR002

- Sorts by tag number
- Shows current count and value of tags

Program: PIR002		FRONTIER 4.0 EC PROGRAM - V4.0 ECS040C							Date: 12/14/20	Page:	
		VALUE OF CURRENT INVENTORY TAGS							Time: 9:54:26		
TAG #	DIV	C GL ACCT	WH	PRODUCT NUMBER	OPER#	WO#	LOCATION	LOT#	COUNT	STD COST	EXT VAL
1032	01	MISC	01	MRG.ACTUAL					EA		
1033	01	MISC	01	MRG.ADDER				00035239	10.000	EA	
1034	01	MISC	01	MRG.ADDER				00045493	10.000	EA	
1035	01	MISC	01	MRG.ADDER				00047338	10.000	EA	
1036	01	MISC	01	MRG.ADDER				00048079	10.000	EA	
1037	01	MISC	01	MRG.AFM				00050851	200.000	EA	85.0000 17000.00
1038	01	MISC	01	MRG.AFM				00051164	200.000	EA	85.0000 17000.00
1039	01	MISC	01	MRG.AFM				00064614	EA	85.0000	

Review Counts

- Create adjustment file
 - PIMENU option 103

ECS041C

11/12/25

11:57:00

NET CURRENT TAGS FROM BEGINNING

Enter the warehouse to be reported on —
(blank for ALL warehouses)

Enter the inventory type to be selected —
(blank for ALL inventory types)

Press ENTER to record your selection, even if both parameters
are left blank.

F3=Submit and exit F12=Cancel

Review Adjustments

- PIMENU option 104
- Lists adjustments by difference in value (descending order) by inventory account

Program:		PIR004		FRONTIER 4.0 EC PROGRAM - V4.0 ECS040C										Date:		12/14/20		Page:									
														INVENTORY ADJUSTMENT FILE IN DESCENDING VALUE										Time:		9:58:46	
TAG #	DV	C	GL	ACCOUNT	WH	PRODUCT NUMBER OPER#			LOCATION	LOT #	TOT PCS	DIF PCS		TOT VALUE		DIFF VALUE											
TOTAL FOR ACCOUNT #																											
1145	01		MISC	01	MRG.FEY.MRP							400.000	EA			286000.0000											
1045	01		MISC	01	MRG.ALP							2500.000-	EA			228250.0000											
1165	01		MISC	01	MRG.MAKE						100.000	953.000-	OZ	5150.0000		49079.5000											
1197	01		MISC	01	MRG.PART							327.935-	EA			32793.5000											
1216	01		MISC	01	MRG.REWORK					00062156		100.000-	EA			26117.0400											
1061	01		MISC	01	MRG.AME					00066322		116.000-	EA			24160.8744											
1236	01		MISC	01	MRG.SWA.BUY							1124.500	EA			19116.5000											
	01		MISC	01	MRG.AFM					00050851	200.000	201.000	EA	17000.0000		17085.0000											
	01		MISC	01	MRG.AFM					00051164	200.000	201.000	EA	17000.0000		17085.0000											

Review Adjustment Report

Correct Counts as needed and Repeat the following

- Update counts via PI74 or PI01 / PI03
- Recreate adjustment file
 - PIMENU option 103
- Review adjustments
 - PIMENU option 104

Update inventory - **FINAL**

- PIMENU option 106
- Can be undone
 - Not recommended - Last resort
- Keeps counts and adjustment file

This job will submit on hold and must be released.

DO NOT SUBMIT MORE THAN ONCE

ECS041C

11/12/25
11:55:59

UPDATE INV SEG WITH DIFF BETWEEN BEG BALANCE/CURRENT TAG

Enter the warehouse to be reported on _____
(blank for ALL warehouses)

Enter the inventory type to be selected _____
(blank for ALL inventory types)

Press ENTER to record your selection, even if both parameters are left blank.

F3=Submit and exit F12=Cancel

Confluence>Wiki Client provides access to Frontier User Manuals by Release Links & Related Content

n - Wiki / Frontier User Manuals by Release



Frontier User Manuals by Release





Owned by [Nathan Mosher](#) ...
Last updated: Dec 20, 2023 by [Faizan Ahmed](#) • 25 people viewed


- [Frontier 4.2 Documentation](#)
- [Frontier 4.1 Documentation](#)
- [Frontier 4.0 Documentation](#)
- [Frontier 3.3 Documentation](#)
- [Frontier 3.2 Documentation](#)


+ Add label


Related content


 Frontier 3.2 Documentation
[Frontier Documentation - Wiki Client Educati...](#)

 Read with this

 Frontier 4.1 Documentation
[Frontier Documentation - Wiki Client Educati...](#)

 Read with this

 UPDDTA - File names & Descriptions
[Faizan Ahmed](#)

 Read with this

- Inventory Management User Manual, Physical Inventory content example

CONTENTS

Application Overview	8
Application Flow	10
Programs	11
Physical Files	12
Note Types	12
Chapter 1, Physical Inventory	13
Concepts	14
Developing a Plan	15
Updating Frontier	17
Procedures	22
Clearing Physical Inventory Tags by Warehouse	22
Loading Physical Inventory Beginning Balances	22
Canceling the Physical Inventory	22
Printing Physical Inventory Tags	23
Verify and Recording the Count in Physical Inventory Maintenance (PI74)	23
Recording the Count in Bar Code Physical Inventory (PI01)	24
Verify the Count in Bar Code Physical Inventory by Tag (PI03)	25
Editing a Physical Inventory Record	25
Displaying Physical Inventory Tags by Tag Number	25
Displaying Physical Inventory Tags by Product Number	25
Displaying Physical Inventory Tags by Location	26
Voiding a Physical Inventory Tag	26
Printing Optional Reports	26
Generating WIP Count Tickets	27
Loading Physical Inventory Adjustment (IAP) File	27
Producing a Physical Inventory Adjustment File (IAP) Report	27
Updating Physical Inventory Net Records	28

WEBINARS AND TECH TALKS

- <https://info.friedmancorp.com/fc-w3brpy9>
- Webinar and Tech Talk presentations for viewing
- Download of slides is generally available for most presentations
- New Webinars & Tech Talks are posted, so check back for new presentations



FRONTIER ERP

- Frontier IPA Webinar
- Frontier 4.2 - Latest features
- An Introduction to eWebServices
- An Introduction to eQuote Dealer
- An Introduction to Frontier CADFlow
- Frontier 3.0 to 4.1; 4.0 to 4.1 (2 sessions, 2021)
- Frontier 4.1 - Focus on Finance
- Frontier 4.1 - Mfg, Ordering, PCM and more
- Frontier Version 4.0
- Customer Portal overview

FOCUS ON MODULES

- iLogging with Live Demo
- SVG and eQuote with Loewen Windows
- eQuote Dealer
- Master File and Sales Order Logging with Springs Window Fashions
- Web Services [See also WebServices Tech Talk]
- CADFlow
- DataBroker
- SCOPE

PARTNER PRESENTATIONS

- Future-Proof your IT with Meridian IT
- Utilize CADFlow with Frontier ERP & Widom Associates
- Demystifying Tax Research and Exemption Certificates with Avalara
- Managing Documents on the IBMi, with Cobwebb Communications
- IBMi: The Power of 10, with Logically
- High Availability and the Cloud, with Meridian Group International
- Content Management and Workflows with RVI
- Governance and Audit Compliance with Klisco
- Cloud for IBM iSeries with Logically
- Streamline your workflow with Sabertis
- Easy Forms and Labels with TL Ashford
- Make it - Move it - Ship it: Frontier ERP integrations with WMS and TMS
- Logimax WMS
- Shipping Solutions with Varisty Logistics
- Streamlining Accounts Payable with Cobwebb Communications
- Shipping Strategies with Varisty Logistics
- Warehouse Management with Logimax WMS and Frontier ERP
- Streamline Manufacturing & Material Flow with RFID & Stratum Global



GENERAL

- iLogging setup (2023)
- Sales Order Attributes (2023)
- WebServices and Your Website (2022)
- MasterFile Importing Functionality in 4.2 (2022)
- Creating Custom Inquiries in 4.1
- iService
- There's Always Something New in PCM (2021)
- Order Promising
- Frontier Security
- Cycle Counting and Physical Inventory
- Using Confluence
- Understanding WebSphere
- Smarter Barcoding
- PCM Workbench Promote
- PCM Workbench
- CSEC System and Installing ECs
- End of year 2024 Physical Inventory, Financials & More

FINANCE-SPECIFIC SESSIONS

- AP Automation (2022)
- Account Payables, Parts 1 & 2
- iStatement issues & resolutions (2021)
- 1099 Processing
- Internal Purchasing
- Streamlining Your Year-End Close
- GL Postings (2021)
- GL Imbalances
- Installing iStatement, Parts 1 and 2
- Audit Compliance with Kisco (2022)

Share Your Thoughts

First Name Last Name

Email

Please enter your comments, questions and/or topic ideas below:

Send



Book a Discovery Call

***Caracal
Keithrafferty***

Business Developer

ckeithrafferty@friedmancorp.com

(847) 834-4854



***Julie
Wright***

Internal Support Consultant

jwright@friedmancorp.com

(847) 948-7180 x7

